



“WAN optimization plays an important part in helping our customers get the highest levels of performance out of their EMC data replication investments and minimize their recurring bandwidth expenses.”

Justin Bartinoski
Manager of the EMC Select program

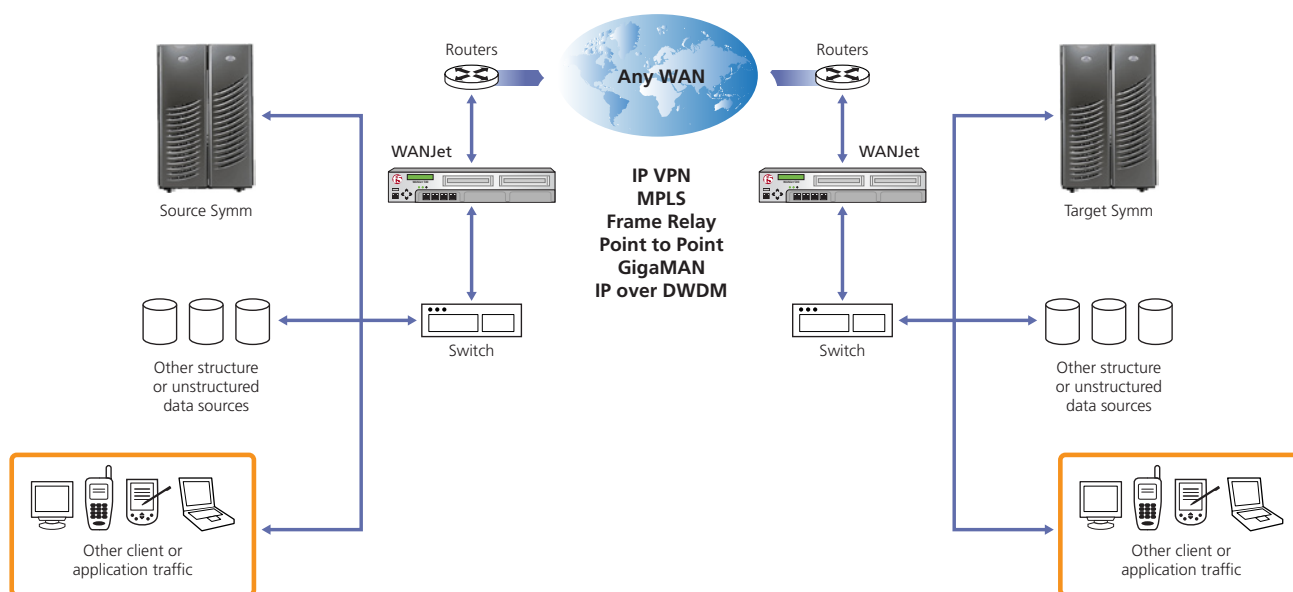
EMC and F5 Networks

As the global leader in Application Delivery Networking, F5 Networks brings proven experience in data replication optimization and applies this focus to EMC customers. F5's WANJet™ WAN optimization solution has been tested and validated for EMC Symmetrix Remote Data Facility® (SRDF) by EMC's E-Lab. F5 is an EMC Select Partner, and WANJet is available for purchase through EMC Select. WANJet is also covered by a cooperative support agreement between F5 and EMC, ensuring customers receive maximum support for the joint solution.

Overview of the Solution

SRDF does an excellent job at meeting the advanced replication needs of organizations worldwide, but like all replication solutions, its performance depends heavily on the network connection between data centers. Wide Area IP Networks (WANs) have several inherent characteristics such as latency, packet loss, network congestion, and bandwidth limitations that can negatively impact replication performance.

F5's WANJet helps improve the performance of the WAN, which in turn improves the performance of SRDF replication. WANJet is a high performance, WAN optimization and traffic-shaping solution that improves the throughput performance of IP traffic over the WAN. WANJet works with all IP WAN traffic, and has been specifically tested by EMC's E-Lab for SRDF/Asynchronous and SRDF/Data Mobility. F5 also interoperates with EMC MirrorView and RecoverPoint replication products.



Benefits to EMC Customers

WANJet provides numerous benefits for EMC replication solutions, including the ability to:

- Reduce replication cycle times, recovery points, and recovery times
- Reduce the bandwidth used for replication by up to 90%¹
- Reduce the frequency of dropped replication processes and the resulting copy jobs necessary to regain synchronization
- Minimize susceptibility to performance variations caused by WAN conditions
- Gain control over traffic prioritization to ensure that replication traffic doesn't suffer due to non-critical traffic congestion
- Provide security through SSL encryption of all traffic in motion
- Enable non-intrusive implementation—no changes to existing network topology or applications

Additional Resources

EMC Select catalog

<http://www.emc.com/collateral/partners/h1900-emc-select-catalog-ldv.pdf>

F5 Partner web site

<http://www.f5.com/emc>

WANJet for SRDF white paper

<http://www.f5.com/pdf/white-papers/wanjet-emc-wp.pdf>

WANJet in Data Replication Environments white paper

<http://www.f5.com/pdf/white-papers/data-replication-wp.pdf>

WANJet is available today via the EMC Select program.

¹Performance varies depending on a number of network characteristics and the data being replicated. For more details, contact F5.



F5 Networks, Inc. Corporate Headquarters

401 Elliott Avenue West
Seattle, WA 98119
+1-206-272-5555 Phone
(888) 88BIGIP Toll-free
+1-206-272-5556 Fax
www.f5.com
info@f5.com

F5 Networks Asia-Pacific

+65-6533-6103 Phone
+65-6533-6106 Fax
info.asia@f5.com

F5 Networks Ltd. Europe/Middle-East/Africa

+44 (0) 1932 582 000 Phone
+44 (0) 1932 582 001 Fax
emeainfo@f5.com

F5 Networks Japan K.K.

+81-3-5447-3350 Phone
+81-3-5447-3351 Fax
info@f5networks.co.jp